

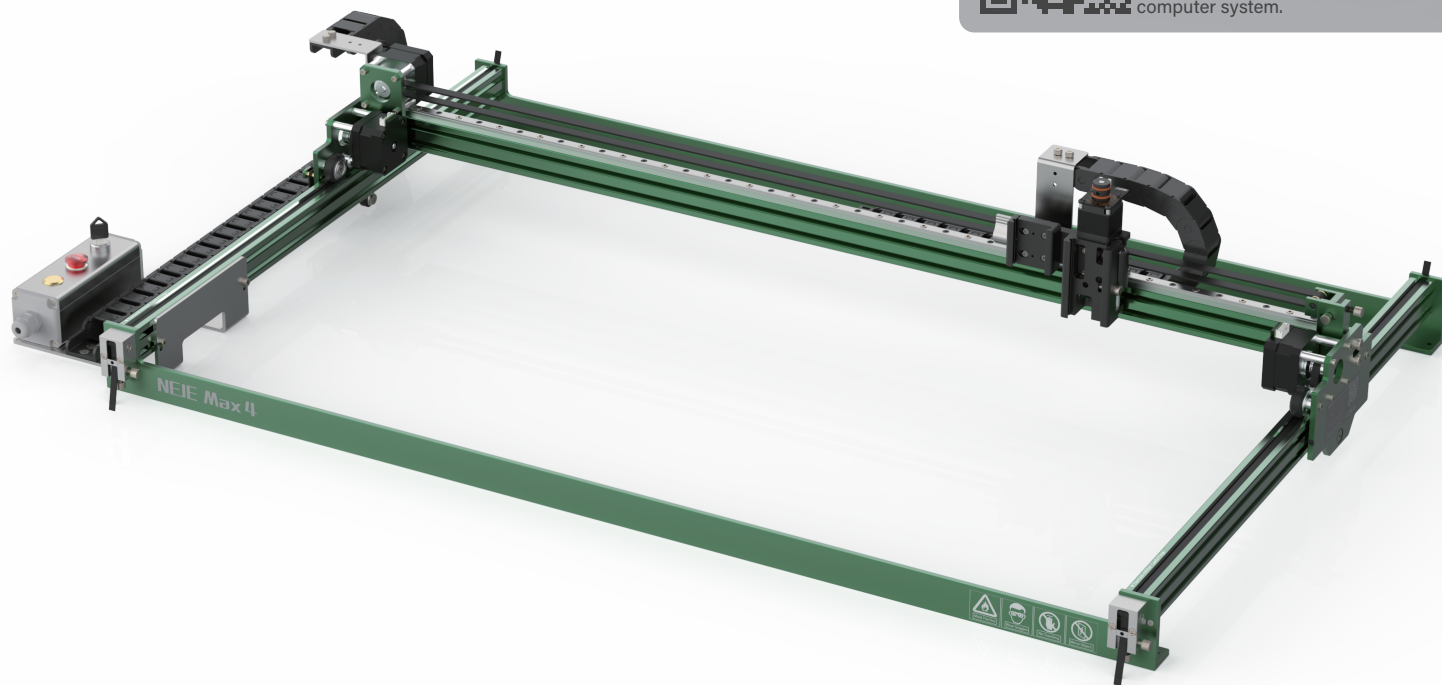
# NEJE

# Instruction Manual

**Model: NEJE Max 4 V2**

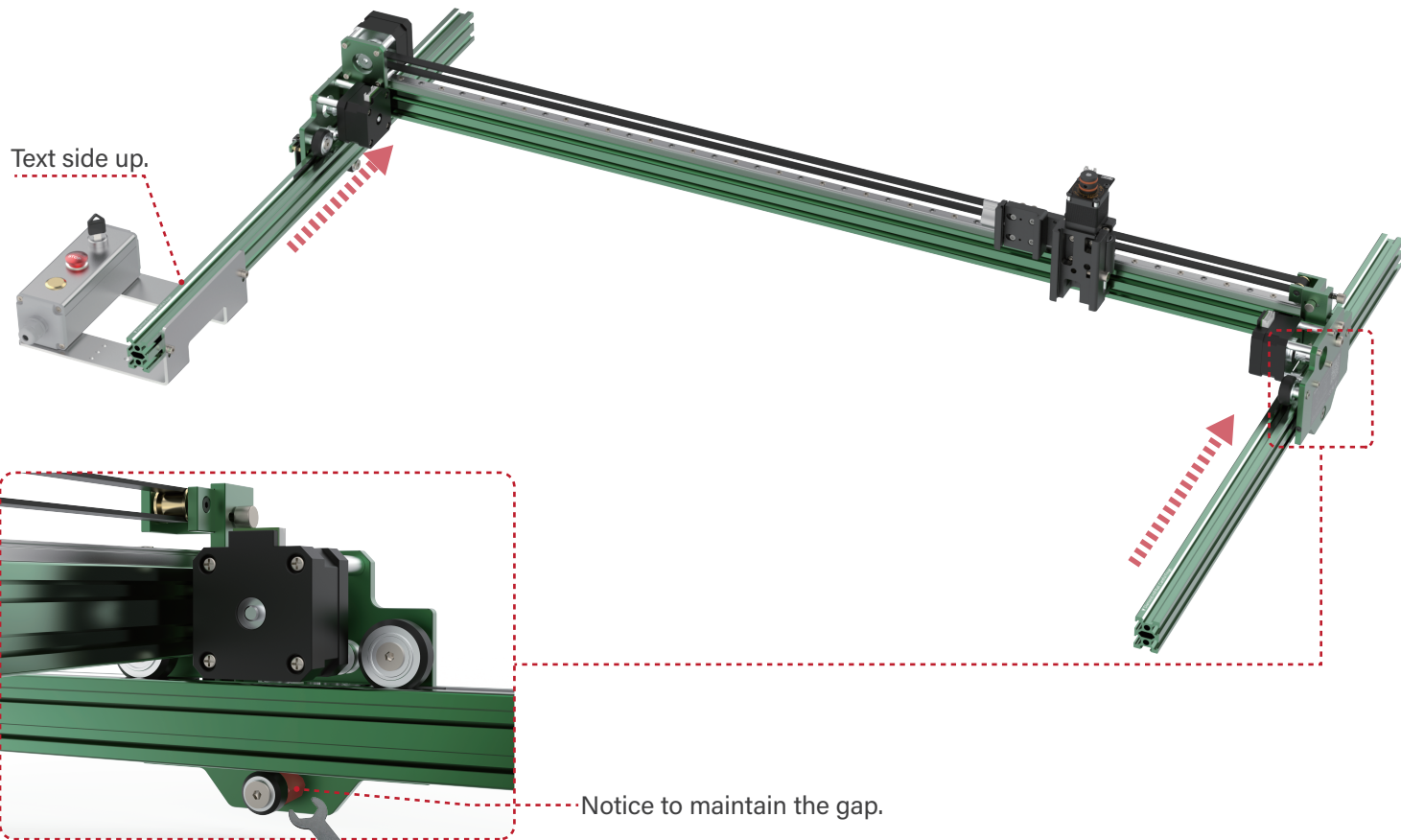


Scan the QR code or visit the website <https://neje.club> to find the appropriate model and access a comprehensive tutorial. Please note that this guide is specifically designed to assist with the installation process for the entire computer system.

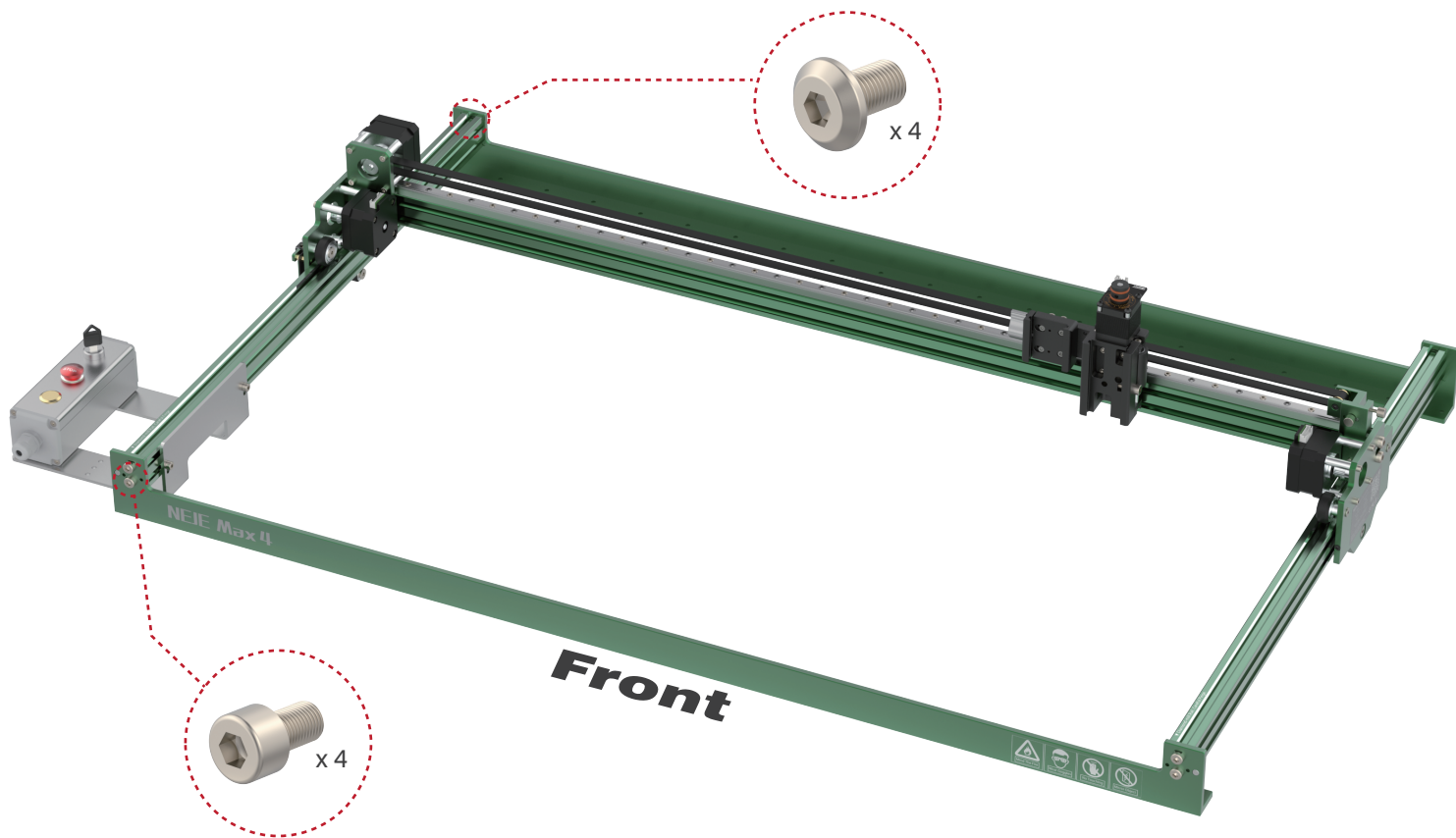




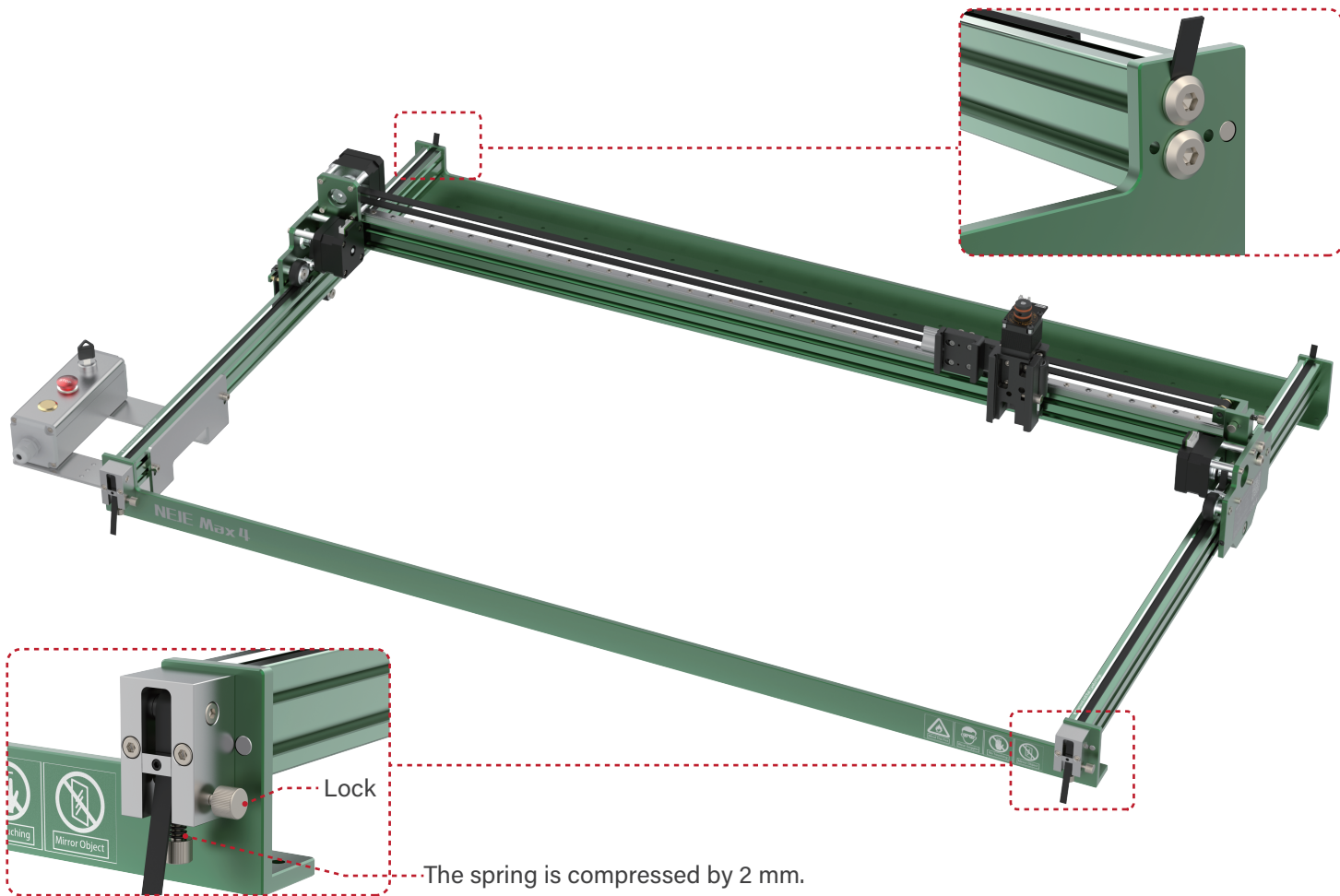
# 1 Install the control box and then install the X-axis



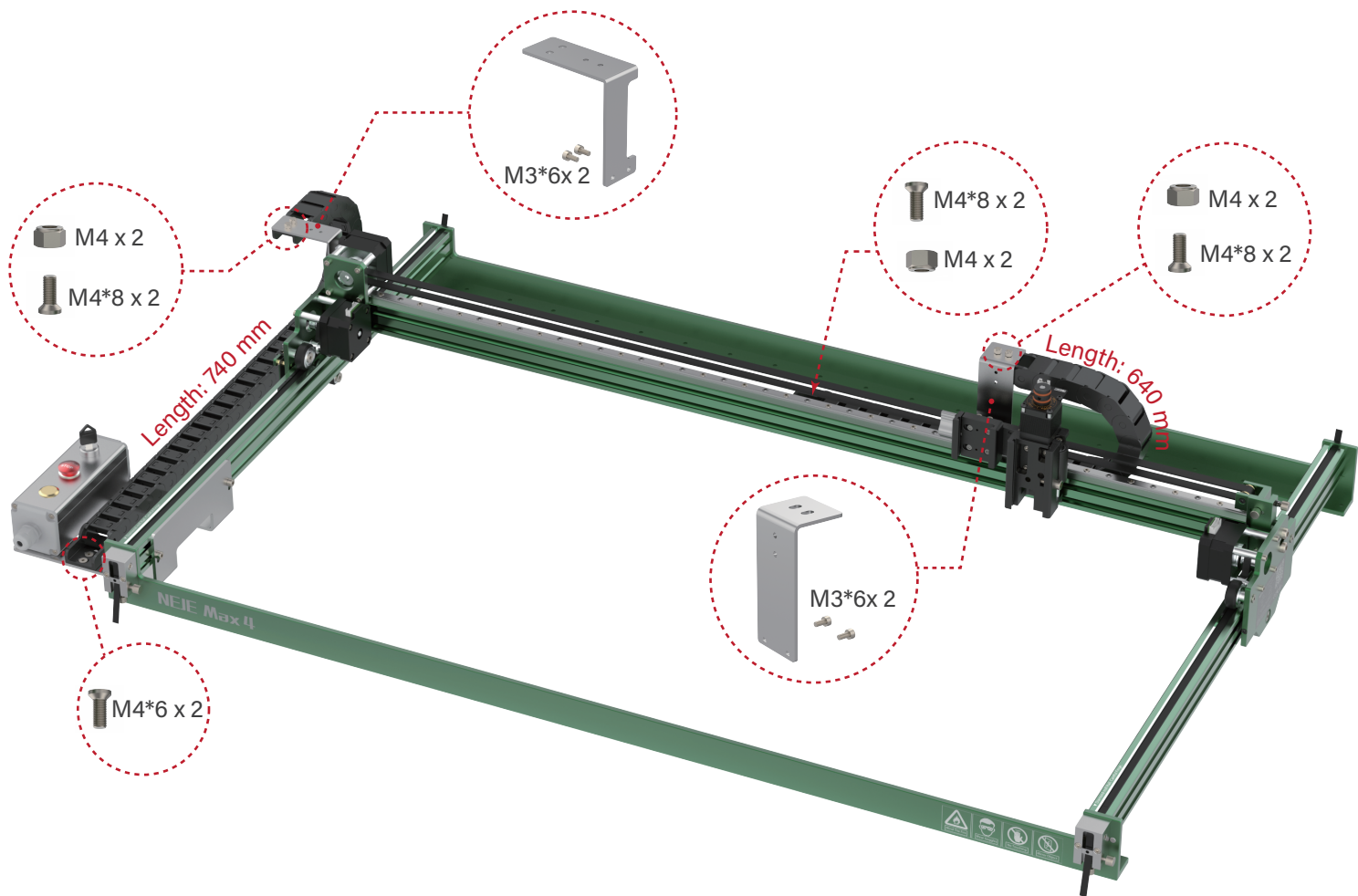
## 2 Install the external frame



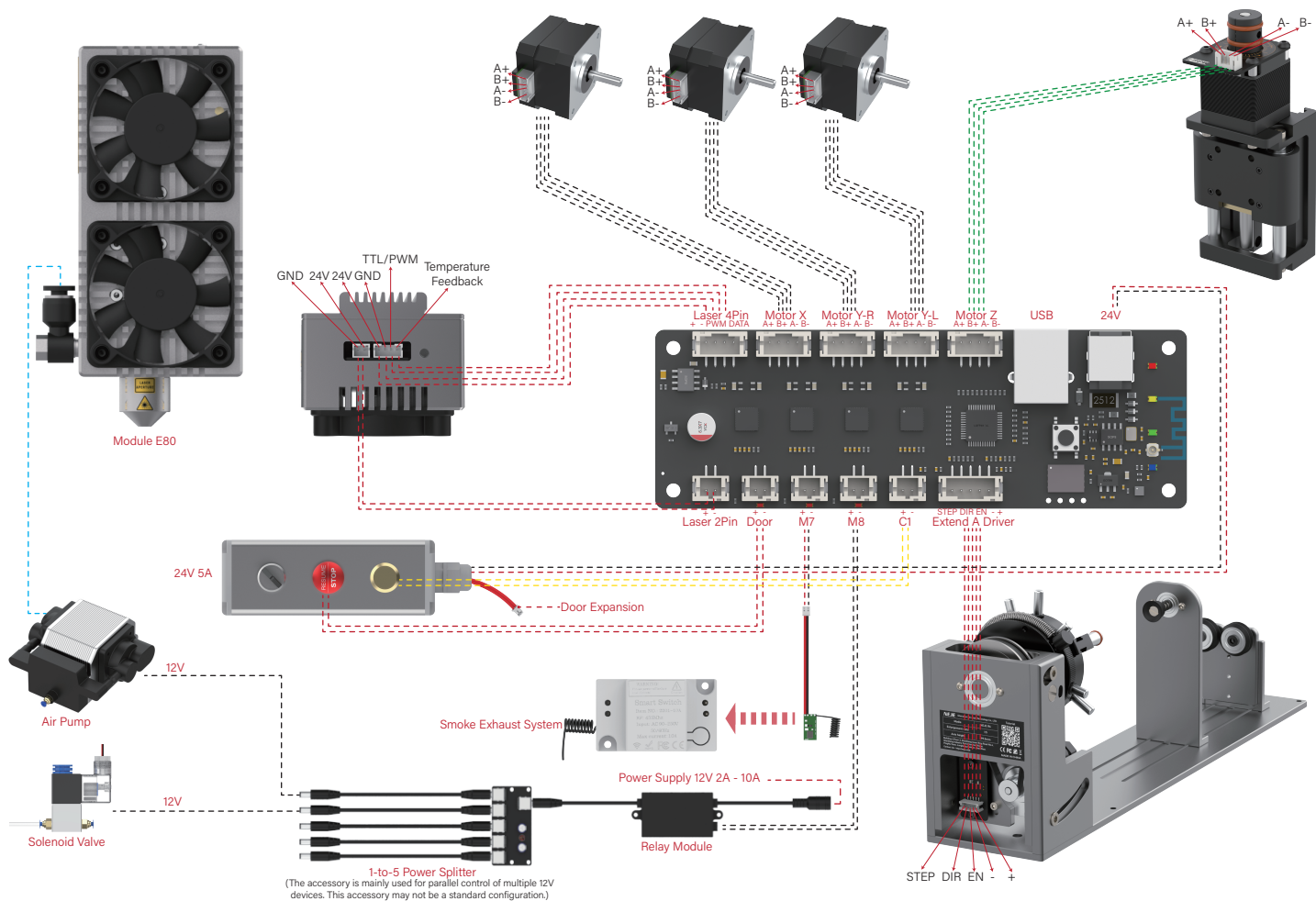
### 3 Install the belt tensioner and route the belt properly



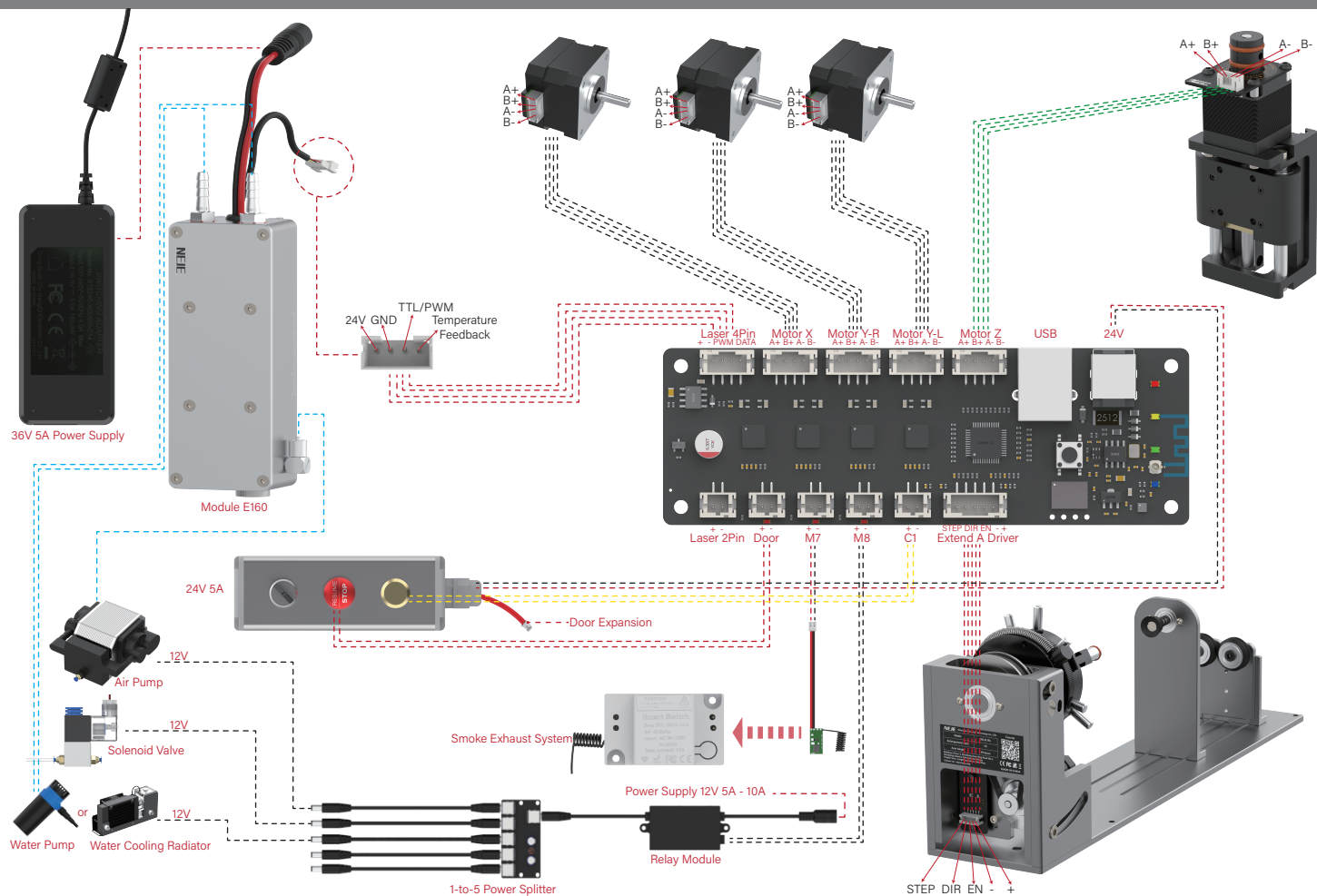
## 4 Install the cable carrier and tidy up the wiring



## 5 E80 Module Wiring Diagram



## 6 E160 Module Wiring Diagram





Manufacturer : Shenzhen Zhi xinjie Technology Co., LTD.

Address : Building 4 Floor 3, ShanKeng Inner Ring Road No.4,  
ShanKeng Industry Park,ShanXia Village,  
PingHu Town, LongGang District, ShenZhen.

Contact Us : <http://neje.club>

EC	REP
----	-----

Outong GmbH Brehmstr.56.40239  
Duesseldorf Germany  
[info@outong.de](mailto:info@outong.de)

MADE IN CHINA



	<b>⚠ DANGER</b> <b>Laser Class</b> <b>4</b>		
<b>VISIBLE LASER RADIATION . AVOID EYE OR SKIN EXPOSURE TO DIRECT OR SCATTERED RADIATIO</b>			
For engraving or cutting wood, fabric, leather, ceramics, stone, glass, metal and other materials DIN EN 60825-1: 2015-07			

